



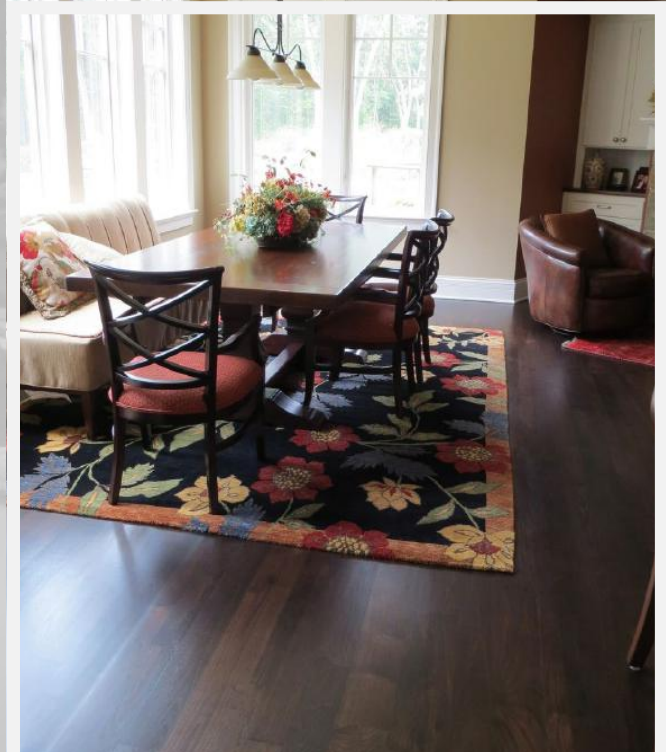
# PRO IMAGE

## FLOORING TOPCOAT



- Low odor
- Low VOC
- Exception clarity
- Superior slip and scratch resistance
- Fast drying

*Pro Image Flooring Topcoat is a single component, Urethane-Acrylic blend, designed for use on hardwood flooring. With a high solids content and a self cross-linking feature, Pro Image has exceptional durability and enhanced chemical resistance.*



General Finishes  
2462 Corporate Circle,  
East Troy, WI 53120  
[www.generalfinishes.com](http://www.generalfinishes.com)

# General Finishes—Pro Image Specifications

## BASICS

USE: Hardwood Floor Finish  
BASE: Water  
TYPE: Urethane  
COLOR: White in can, dries clear  
SHEEN: Satin (25-35), Semi-Gloss (50-60)  
SIZE: Gallons  
PACKAGING: plastic f-style, pourable  
SOLIDS CONTENT: 32%  
VOC: Satin <223.72 g/L, Semi-Gloss <231.633 g/L  
DEFOAMING: Excellent  
LEVELING: Excellent  
DURABILITY: Highest  
STABILITY: 1 year shelf life in proper conditions  
MFMA STANDARD: Pass

## APPLICATION

APPLICATOR: Roller, T-Bar, Pad, Brush (NO SPRAY)  
COVERAGE: 500 sq.ft. / gallon  
THINNING: Up to 15% using General Finishes Extender  
EXPOSURE: Interior use only  
CLEAN UP: Water or GF Brush and Gun Cleaner  
STORAGE: Decant product as needed, and store well-sealed in moderate temperatures avoiding direct sunlight. **Keep from freezing!**

## DRY TIMES

COATS: 2-3  
TOUCH: 45+ minutes  
RECOAT: 4+ hours  
DRY TIME: Light use 24-48 hours, regular use 5 days  
CURE: 10 days

## USAGE RECOMMENDATIONS

High traffic residential, family rooms, kitchens, entry ways

## APPLICATION RECOMMENDATIONS

**New Installation/Refinish:** 1 coat stain or sealer + 2-3 coats Pro Image, will work over existing finishes.

**Screen and Recoat:** 2 coats Pro Image

**Over Stains:** Allow stains to dry per manufacturer's instructions

Not recommended for use over long oils such as Danish oil or Linseed oil, or over hard wax oils.

LIMITED WARRANTY: General Finishes products must be tested to your complete satisfaction before using. General Finishes will not be responsible for color satisfaction, misapplication, nor compatibility with other manufacturers' products. General finishes will be responsible only for the cost of our products, and not for costs such as labor, damage or product replacement.

*General Finishes has been manufacturing quality finishes since 1928. Purchased by our current owner in 1984, we have spent the last 30+ years developing one of the most comprehensive and innovative lines of water-based products on the market. General Finishes is sophisticated enough to tackle all your finishing needs, and small enough to give you service larger manufacturers cannot.*

